



(CH) adUL1100

Puertas & Portones Automáticos, S.A. de C.V.
¡Nuestra pasión es la Solución!....

» CIERRAPUERTAS HIDRAULICO (CH) DE SOBREPONER AJUSTABLE Y REGULABLE FUERZA 2 - 4 (25 A 85KG) MARCA ADS MOD.UL1100.

- En1154 & EN1634 Fire test
- UL listed product, UL 10C 3 Hours fire certified
- Trigonal Design in Compact body
- Adjustable force 2-3-4 by moving install position
- High Quality Cast Aluminum Alloy Case
- Universal application. P.A bracket will be provided upon request
- Easy & Fast installation with mounting



UL1100 SERIES DOOR CLOSER

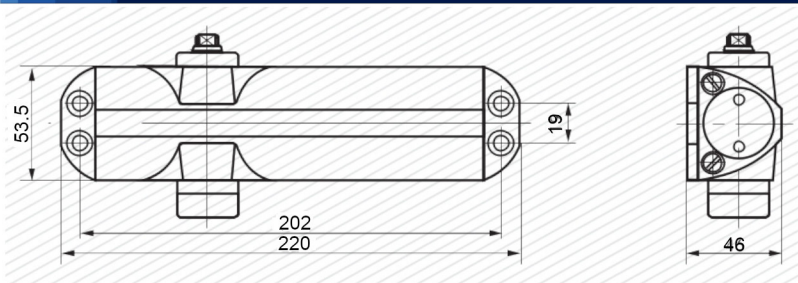
(OU-00001-00)



CROSS REFERENCES

YALE	GEZE	DORMA
2234	TS1000	TS68

The data on this represents our judgment of which are most similar, since no product is exactly alike each other, it is not guaranteed nor represented that any specific product exactly equals any other product.



UL1100SL: with Slide arm, the power size will reduce to size 2

Type	Max. Door Width (mm)	Door Weight (kg)	Power Size
UL1100	950	25-85	size 2-3-4 by position
UL1100SL	850	25-45	Fixed size 2

(229) 288-1552

portonesautomaticos@adsver.com.mx
 portonesautomaticos@prodigy.net.mx



V05.20